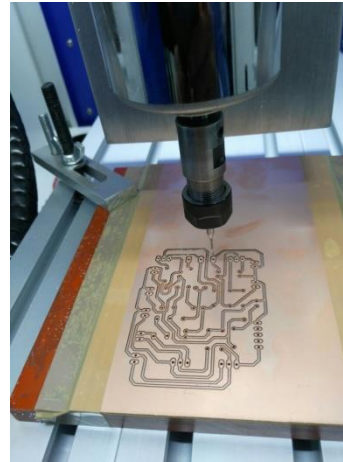


PCBMATE -300W



Features	Specification
PCB Prototyping System	PCB Prototyping Standard Kit
Software	Copper CAM and Mach3 Mill
Accessories	Handheld Remote Control unit for Machine Setting
Resolution (X/Y)	3.125 Micro Meter (0.123 Mil)
Working Area (X/Y/Z) (mm)	220x330x120
Minimum Width Line & Space in mm	0.1 (4 mil)
Max Travel Speed (mm/sec)	58 (2.28 ")
Drilling (mm)	0.2 -3.175 (8-125 mil)
Maximum Drilling Cycles/ Min	50
Conversion Software	Converts Gerber, G code
Positioning Camera and Vision screen	Available
Main Axle Power Rate	300 W
Main Axle Rotating Speed	25000 RPM
Max working speed	3500mm/min

Agimus Technologies Pvt Ltd

No. 322/121, 2nd Floor, Madiwala, Hosur Main Road, Bangalore- 560068

Ph: +91 9538757011, Email: info@agimustech.com

www.agimustech.com

Feeding Height	120 mm
Working drive	0.02-0.05mm
Repositioning accuracy	0.01-0.02mm
Capability of Processing various materials	FR4, Copper clad, Acrylic, Metal, Aluminum and etc.,
Power	220 V AC
Weight	52 Kg

1a. Software Specification

i) G Code Convertor Software – Copper CAM:



G code Convertor is an application for managing isolation engraving, drilling and cutting printed-circuit board prototypes.

- Native 32 bits program for Windows 7 / 8 / 10
- Import of Gerber & Excellon files, with automatic or manual alignment
- Reading Gerber RS274-X format with macros, polygon surfaces and negative polarity traces
- Real-time display of equipotential paths through layers
- Manual modification of isolation contours (deletion or addition with auto-snap)
- Enforcement of isolation between very close pads
- Selection of tracks to be engraved at path centre (texts, logos or references)
- Possible drills with boring cycles, reducing the number of tool changes
- Automatic calculation of board contour cut-path, with manual addition of support bridges
- Management of a tool library and drilling strategies depending on available cutters
- G-code output, or HPGL, DXF, ISEL-NCP, Roland RDGL, etc.
- Automatic chaining to a machining driver, or output to a virtual printer driver or a COM / LPT port
- Opening Gerber file containing one circuit layer
- Opening next layers (maximum 4), if any
- Detecting or plotting card cut-out contour
- Opening Excellon file for drillings, if any
- Aligning layers (automatic or manual)

Agimus Technologies Pvt Ltd

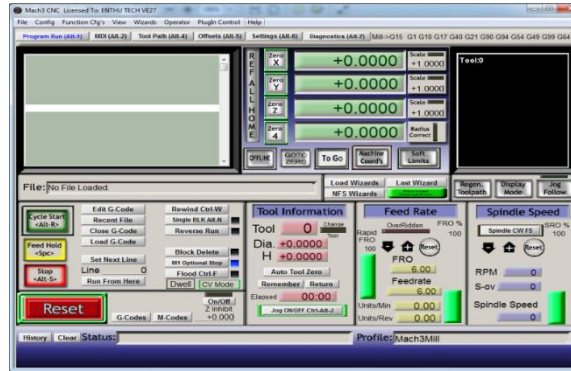
No. 322/121, 2nd Floor, Madiwala, Hosur Main Road, Bangalore- 560068

Ph: +91 9538757011, Email: info@agimustech.com

www.agimustech.com

- Plotting tracks that are centerline texts
- Hatching zones for removing all the copper
- Checking drill tools and eventual boring cycles
- Sending output data to the driver software or to the machine

ii). Machine Operating Software – Mach3 Mill:



The Mach Operating software is one of the most versatile CNC control packages.

The Operating Software turns a typical computer into a CNC machine controller. It's on most Windows PC's to control the motion of motors (stepper & servo) by processing G-Code. While comprising many advanced features, it is the most intuitive CNC control software available.

- Converts a standard PC to a fully featured, 6-axis CNC controller
- Allows direct import of DXF, BMP, JPG, and HPGL files through LazyCam Visual G code display
- Fully customizable interface
- Spindle Speed control
- Multiple relay control
- Manual pulse generation
- Video display of machine
- Touch screen ability & Full screen eligibility

iii). Surface Levelling Software - Auto Leveller:





- **AutoLeveller** is easy to use. Just input a GCode file, change a few probing settings and output another GCode file.
- **AutoLeveller** is written in Java which means its platform independent and can be used in any OS. Linux, Windows, MacOS.
- **AutoLeveller** is not tied to any particular CNC control software. Currently, either LinuxCNC or Mach3 can be used.
- **AutoLeveller** is not tied to any particular Isolation or CAM software. **AutoLeveller** reads from a GCode file and it does not matter where that file is created.
- **AutoLeveller** stops your tool from going too deep. If a V-bit is used then going too deep will mean the traces are narrower than you intend as a V-bit is wider at the base. The tool may also struggle to cut at depth ruining the tool quicker.
- **AutoLeveller** stops 'air cuts' where the tool tip is higher than the surface and therefore no etching takes place.
- You can mill / etch at a much shallower depth when levelling. In the video, I am etching at -0.1mm whereas in the past I have tried -0.2mm which still produced 'air cuts'. Ultimately this reduces waste as less boards are binned. In a way, **AutoLeveller** helps the planet.

Agimus Technologies Pvt Ltd

No. 322/121, 2nd Floor, Madiwala, Hosur Main Road, Bangalore- 560068

Ph: +91 9538757011, Email: info@agimustech.com

www.agimustech.com

<p>1b.</p>	<p><u>PCB Cabinet</u></p> <ol style="list-style-type: none"> 1. User Safety during Machine Working Time 2. This types of cabinet having storage space in Bottom of panel 3. Panel door having Emergency Stop Button 4. Length x Width x Height: 600 x 600 x 1200 mm 	
<p>1c.</p>	<p><u>Vacuum Cleaner - Eureka Forbes</u></p> <p>Easy Clean Plus 800-Watt Vacuum Cleaner</p> <ol style="list-style-type: none"> 1. Portable Vacuum cleaner with 800 watt motor power 2. Both suction and blower functions Lightweight, handheld vacuum cleaner which is ideal for daily cleaning 3. Special 18 feet long cord for easy reach around the house 4. Blower accessory for multipurpose use Dust cup for easy disposal of garbage 5. Warranty: 1 year on product 6. Power: 800 watts; operating voltage: 230 volt 	
<p>1d.</p>	<p><u>HP 19.5-inch – Desktop Computer</u></p>	
<p>1e.</p>	<p><u>Double Sided Copper Clad Laminate Circuit Board</u></p> <p>10 x 15 cm (Glass Epoxy FR4 PCB)</p> <ol style="list-style-type: none"> 1. Layers: Double Sided; Material: FR4 Glass Fiber; 2. Surface Finishing: Copper Clad; 3. Total 20 Piece 	

1f.	<p><u>Single Side Copper Clad Laminate Circuit Board</u> 10 x 15 cm (Glass Epoxy FR4 PCB) 1. Layers: Single Sided; Material: FR4 Glass Fiber; 2. Surface Finishing: Copper Clad; 3. Total 20 Piece</p>	
1g.	<p><u>Drill Bits</u> 1. Diameter: 3.175mm 2. Rotary Burrs 0.6-1.5mm 3. Total bits: 10(each 1) – 2 sets</p>	
1h.	<p><u>Engraving Bits</u> 1. Shank diameter: 3.175mm (1/8") 2. Total Length: 33mm 3. Router Bit: 0.1mm 30Degree 4. Total Bits: 20 Nos</p>	
1i.	<p><u>Spring Collet Chuck Tool Bit Holder (One Piece)</u> 1. Model Number: ER16 5.5mm</p>	
1j.	<p><u>PCB Washing tub</u> 1. 20 Ltrs Capacity</p>	
1k.	<p><u>Digital Microscope Endoscope Camera</u> Magnification adjustable from 50X to 500X. Snap Shot Format : JPEG Light Source : 8 White Light LED (with adjust controller on USB cable) Magnification Ratio: 500X (Manual) Power Supply : USB Port (5V DC) Software : Driver and Measurement System Requirement : Pentium Computer with 700MHz & Above, 20M HD Space CD ROM Driver, 128MB RAM, Direct X VGA Card PC Interface: USB2.0 & USB1.1</p>	